

CASE STUDY

Care home benefit from
a septic tank upgrade

REWATEC®

Grease separator and SAF



QUICK FACTS

Application

Residential Care Home, Cornwall, UK

Needs

- A reliable sewage treatment plant to meet a change in regulations
- Separation and trapping of grease
- Odourless operation

Solution

Rewatec grease separator and submerged aerated filter (SAF)

SITUATION

The Poldhu Care Home is one of Cornwall's leading private health care providers and has been operating in the UK since 1984. Situated at the top of the picturesque Poldu Cove and surrounded by 10 acres of grounds, the Poldu Care Home has one of the most scenic landscapes in the country.

In January 2020, a change in the Environment Agency regulations meant that the permit for the Care Homes existing septic tank was no longer valid to discharge effluent into the sea.

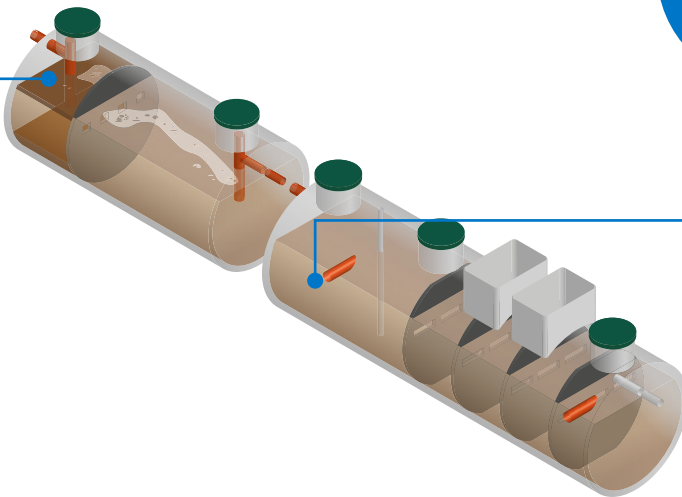
A replacement of their existing septic tank was therefore required to meet the new standards and specified consent. In addition, the Care Home also needed a method of trapping grease from their wastewater outflows to prevent odour and blockages further downstream.

SOLUTION

Working together with Premier Water Solutions 10 LTD (PWS), Premier Tech recommended a Rewatec grease separator to provide an effective means of separating fats and grease from the incoming wastewater, followed by a Rewatec SAF to provide biological wastewater treatment. The full system is illustrated below.

Grease separator

For the effective separation of fats and grease from the Care Homes wastewater.



ENSURING COMPLIANCE WITH COST EFFECTIVE TREATMENT

Submerged aerated filter (SAF)

Installed to meet the new Environment Agency regulations and to treat the wastewater using an energy efficient blower and plastic biofilm media.

By replacing their existing septic tank with a Rewatec SAF, the Poldu Care Home now fully meets the standards outlined by the Environmental Agency - both in organic, as well as in nitrogenous traces in the effluent. The addition of the Rewatec grease separator also ensures the full separation of grease, fats and oil produced from predominantly kitchen appliances within the Care Home before the wastewater flow enters the SAF for treatment.

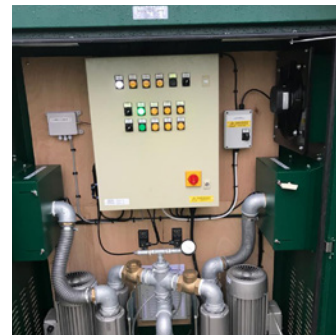
"We are really pleased with how the install has gone and how efficiently the plant is working. There is a large amount of grease already in the grease trap, the effluent is clear and there is no odour from the plant operation."

Louisa Inch | Managing Director
Premier Water Solutions 10 Ltd



"Swallowcourt appointed Premier Water Solutions 10 Ltd to oversee the whole project from design and specification, through to installation and maintenance. We are delighted as to how Louisa and the team implemented the whole project, ensuring we complied with the change in environmental legislation. We would recommend using them and installing Premier Tech Water and Environment tanks to anyone in the industry."

Mike Tippet | Project Manager - Swallowcourt



PT Water and Environment

+44 (0) 191 5878650
sales.ptwe.uk@primiertech.com
PT-WaterEnvironment.co.uk

