

# Guide for professionals

# ECOFLO<sup>®</sup>

Sustainable wastewater treatment





# People and Technologies making a difference

Premier Tech brings to life products that help feed, protect, and improve our world.

- **founded in 1923**
- **family business**
- **4,700 team members worldwide**
- **47 factories in 28 countries**

Through its Water and Environment business group, Premier Tech designs and manufactures sustainable local solutions for wastewater treatment:

residential



commercial



Together, we make green technologies accessible and continuously innovate to create solutions that last.

## Making a difference for water and the environment

At Premier Tech, People and Technologies connect in lasting, transformative ways, giving life to products and services that help feed, protect, and improve our world.

Our team of experts constantly innovates, redefining what is possible through effective, efficient, and sustainable solutions. Driven by a shared passion, we are committed to protecting our resources for the future.

# Why Ecoflo?

With the aim of further preserving our watercourses, rivers, streams, eco-systems and our planet, areas of the UK are already beginning to stipulate stricter effluent standards for sewage treatment plants and septic tank outflows.



Premier Tech Water and Environment has successfully developed Ecoflo to further improve the effluent quality for both residential and commercial projects that require off-mains wastewater treatment.

With a high absorption capacity, our coconut-husk fragments are produced by cutting up the husk that surrounds the fruit of the coconut. This mechanical process ensures complete control over the size of each fragment and overall

porosity, guaranteeing a uniform filtering medium that delivers a consistently high wastewater treatment performance for your customers over time.

Ecoflo, which conforms to BS EN12566-3 for secondary treatment and BS EN12566-7 for tertiary treatment, can simply be added to existing sewage treatment plants or septic tanks to provide an extremely high quality final effluent.



# How does Ecoflo work?

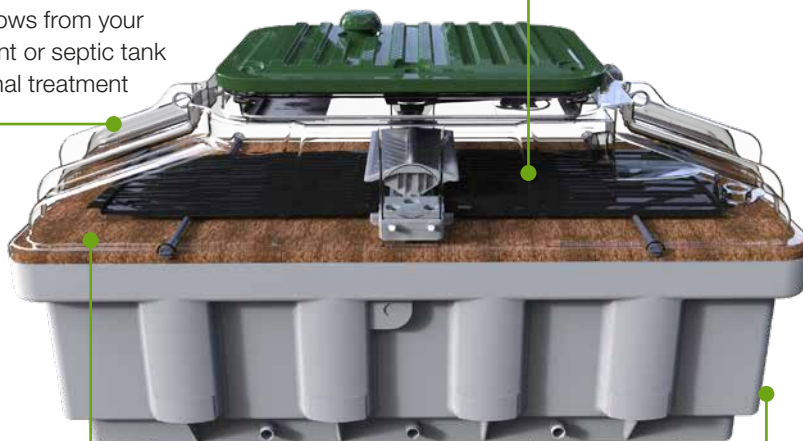
By removing suspended solids and other pollutants in wastewater effluent to an even higher standard, Ecoflo can further prevent groundwater and water pollution in the UK. This in turn can reduce tainted drinking water, reduce water scarcity and shortages, limit the environmental impact on rivers, lakes and their habitants and ultimately protect our planet. Ecoflo will also ensure that dated septic tanks adhere to the *2020 General Binding Rules*.

## 1. Wastewater inflow

Wastewater effluent flows from your sewage treatment plant or septic tank into Ecoflo for additional treatment

## 2. Non-mechanical tipping bucket

Inside Ecoflo, wastewater is scattered across perforated distribution plates before falling across the coconut filter.



## 3. Coco Filter

This filter is the heart of Ecoflo. It creates a physical treatment barrier that cleans the effluent to an even higher standard.

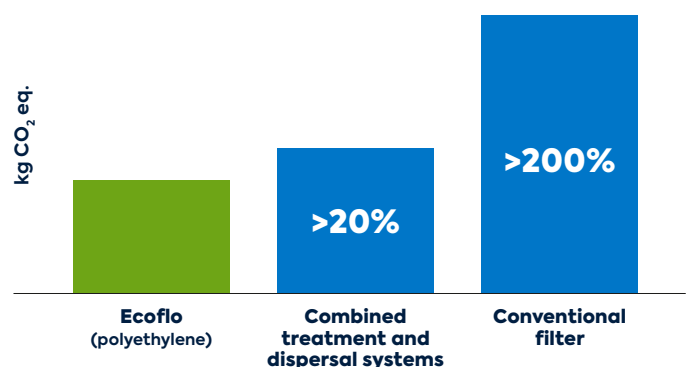
## 4. Final discharge

After percolating through the all-natural filter, water is then safely discharged into the environment.

## LOWEST CARBON FOOTPRINT

From production and shipping to installation, maintenance, and usage, Ecoflo has the lowest carbon footprint of any product on the market.

### Total after 50-year life cycle



# Ecoflo advantages for your customers

## PEACE-OF-MIND PERFORMANCE

- 24/7 autonomous operation
- Does not clog soil or contaminate property
- Worry-free warranty
- Can cope with periods of fluctuating usage

## INSTALLED FOR LIFE

- Zero energy required
- Extremely clean effluent
- Easy installation
- Never needs to be removed or replaced

## COMPACT AND DISCREET

- Odourless
- Blends into your customers landscaping

## LOW MAINTENANCE

- Replacement of coco filter every 10-15 years

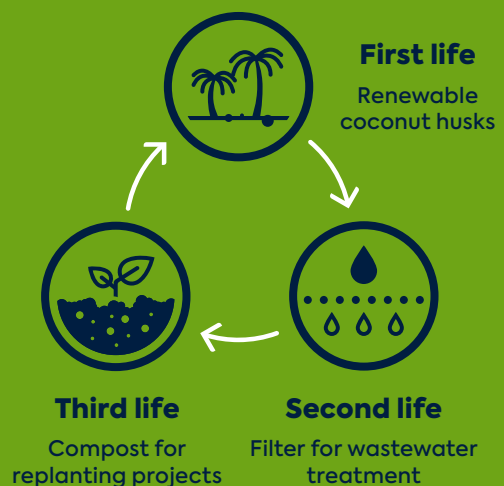
## BEST LONG-TERM INVESTMENT

- Maintains the selling price of your customers property
- No energy bills
- No hidden costs
- No full-system replacements

## NATURAL, RENEWABLE, COMPOSTABLE FILTER

By transforming coconut husk fragments into a filtering media, we also give second life to a valuable resource and ensure that no part of the coconut tree's bounty is wasted.

Due to the nature of the coconut husk filtering media, the all-natural product we create is not only renewable, but fully compostable after its years of treating wastewater are over.



## INSTALLATION

Ecoflo is packaged as a super-reinforced sewage treatment system and can be easily installed in a free-flowing granular backfill or concrete.

## WARRANTY

All Premier Tech polyethylene tanks come with a standard 10-year warranty. Individual product and part warranties are available upon request.

Premier Tech works closely with a nationwide network of installation professionals. We proudly provide all of our partners with installation guidelines for each of our products.

**10**  
**YEAR**  
WARRANTY

# Ecoflo is how we make a sustainable difference. Together.

## > QUICK INSTALLATION

- Simple plug and play design
- No need to remove an existing septic tank or sewage treatment plant
- Does not require space for a percolation area
- Ready to use systems
- Easy to follow instructions
- Troubleshooting by our experts
- Lightweight

## > PRODUCT AVAILABILITY

- Manufactured in the UK for quick availability
- Reliable order tracking



Ecoflo simply connects to an existing septic or sewage treatment plant and improves the quality of the effluent.

## SEWAGE TREATMENT PLANT USERS

Connecting Ecoflo into an existing sewage treatment plant provides much improved effluent levels and prepares users for stricter standards.

## NEWLY INSTALLED SEWAGE TREATMENT PLANTS

Ecoflo can also be specified as part of a new treatment system to fully protect and preserve UK watercourses, streams and nearby rivers.

## SEPTIC TANK USERS

Properties with dated septic tanks and soakways can be upgraded with an Ecoflo system without the need to replace the existing tank.

**THE #1 COMPACT SYSTEM OF CHOICE!**

## OFF-GRID APPLICATIONS WHERE IMPROVED EFFLUENT QUALITY IS BENEFICIAL

- Domestic properties
- National parks
- Leisure and holiday parks
- Golf courses
- Stately homes
- Visitor centres
- Zoo's and animal enclosures
- Sports venues
- Local authority parks



## RANGE AND OPTIONS

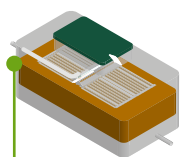
- 4-50 PE (secondary)
- 16-200 PE (tertiary)
- 2, 3 or 4-way splitter chambers.
- Pumped or gravity discharge

Example options include:

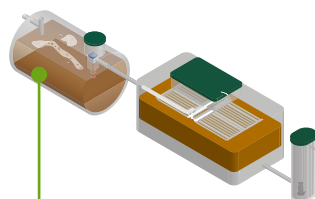
## MANUFACTURER SUPPORT

Ecoflo is manufactured to meet a variety of capacity needs, so whether your project is residential, commercial, requires a bespoke design or has to cope with seasonal fluctuations or flow intensity, Premier Tech can meet your requirements.

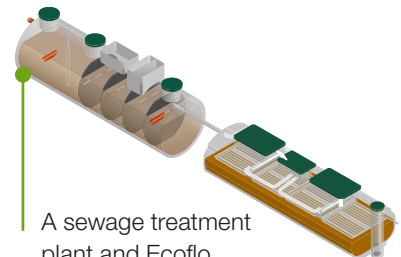
- Expert advice by phone or online
- Worry-free warranty



Stand-alone Ecoflo



A septic tank and Ecoflo (secondary treatment)



A sewage treatment plant and Ecoflo (tertiary treatment)

# Protecting our communities, our environment and our planet for generations to come

## ECOFLO TREATMENT RESULTS

Treatment	Parameter			
	COD	BOD <sub>5</sub>	TSS	NH <sub>4</sub> -N
Secondary Effluent (mg/L)	59	5.4	5.2	5.5
Removal from secondary (%)	92.2	98.2	98.5	91.1

as per 12566-3 Declaration of performance

Tertiary Effluent (mg/L)	34.8	2.4	1.2	2.5
Removal from tertiary (%)	41	56	77	54

as per 12566-7 Declaration of performance

## ECOFLO TECHNICAL DATA

Filter surface (m <sup>2</sup> )	Ecoflo (options)	Secondary	Tertiary	Ecoflo requirements
		Hydraulic (L/d)	Hydraulic (L/d)	
2.6	4	600	2,400	1 x Ecoflo 4
3.9	6	900	3,600	1 x Ecoflo 6
5.2	8	1,200	4,800	2 x Ecoflo 4
7.8	12	1,800	7,200	2 x Ecoflo 6
11.7	18	2,700	10,800	3 x Ecoflo 6
16.9	26	3,900	15,750	1 x Ecoflo 26
24.7	38	5,700	23,100	1 x Ecoflo 38
32.5	50	7,500	30,000	1 x Ecoflo 50



### PT Water and Environment

2 Whitehouse Way,  
South West Industrial Estate  
Peterlee, Co Durham  
SR8 2RA UNITED KINGDOM

+44 (0) 191 5878650  
sales.ptwe.uk@premiertech.com  
PT-WaterEnvironment.co.uk



The information contained in this document was current and consistent with the information available at the time of publication. Premier Tech Ltd. makes no warranties or representations as to its accuracy. Because of its continuous improvement policy, Premier Tech Ltd. and its affiliated companies reserve the right to change and/or discontinue the manufacture of any product and/or modify technical data and prices, for any reason whatsoever and at its sole discretion, without further notice and without liability to anyone in this regard.

© 2022 Premier Tech Ltd. All rights reserved.  
Printed in United Kingdom

UK  
20220106