



The sustainable septic  
solution that protects  
your property

**ECOFLO<sup>®</sup>**



Certified  
to NSF/ANSI  
standard  
40 & 245



Certified  
to CAN/BNQ  
standard  
3680-600



Certified  
to BNQ  
standard  
NQ 3680-910

# What is a septic system?

Wastewater is any water that we contaminate. For example, it is water we use to flush toilets, take showers, clean clothes, or wash dishes.

When a property is not connected to a municipal sewer, its wastewater must be treated by an on-site septic system.

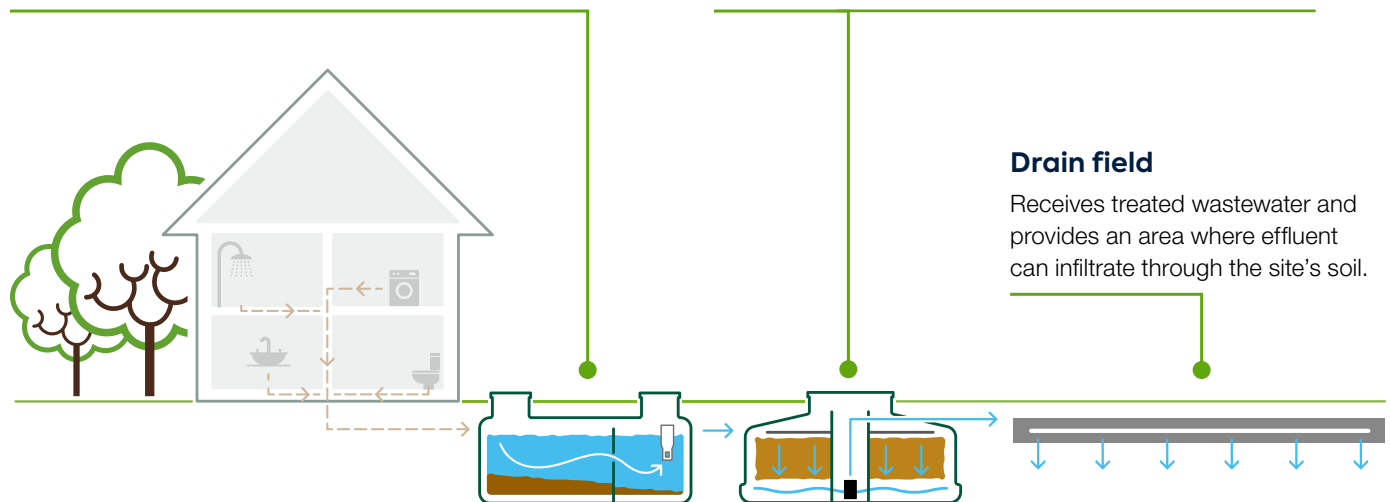
## What does a typical septic system look like?

### Primary treatment: Septic tank

Receives untreated domestic wastewater from the residence. The tank retains solid materials and sends partially clarified wastewater downstream.

### Secondary treatment: Ecoflo biofilter

Receives wastewater from the primary treatment unit. Microorganisms that naturally develop in the secondary system remove wastewater pollutants. The system sends treated wastewater downstream.



### Drain field

Receives treated wastewater and provides an area where effluent can infiltrate through the site's soil.

### Additional treatment (when required)

Check the regulation in your area to determine if tertiary treatment is needed with your septic system.

Premier Tech Water and Environment offers:

- UV disinfection
- nitrogen reduction

# Steps for a septic system project\*

1

## Initial assessment

Is this a new installation or an upgrade?  
How many bedrooms are in the residence?



2

## Site assessment

A septic designer determines your site's topography, soil permeability, groundwater levels, rock layers, and the location of your well. This information defines the area available for a septic system.



3

## Design

A septic designer or engineer designs a plan and gives you product options with cost estimates.



4

## Permit application

The installer gives you a quote for construction costs. After you choose the septic system you want, you can apply for a permit.



5

## Installation

The installer performs the work needed to install the septic system.



6

## Use and maintenance

Regular maintenance maximizes the lifespan of the septic system and ensures it treats wastewater effectively.

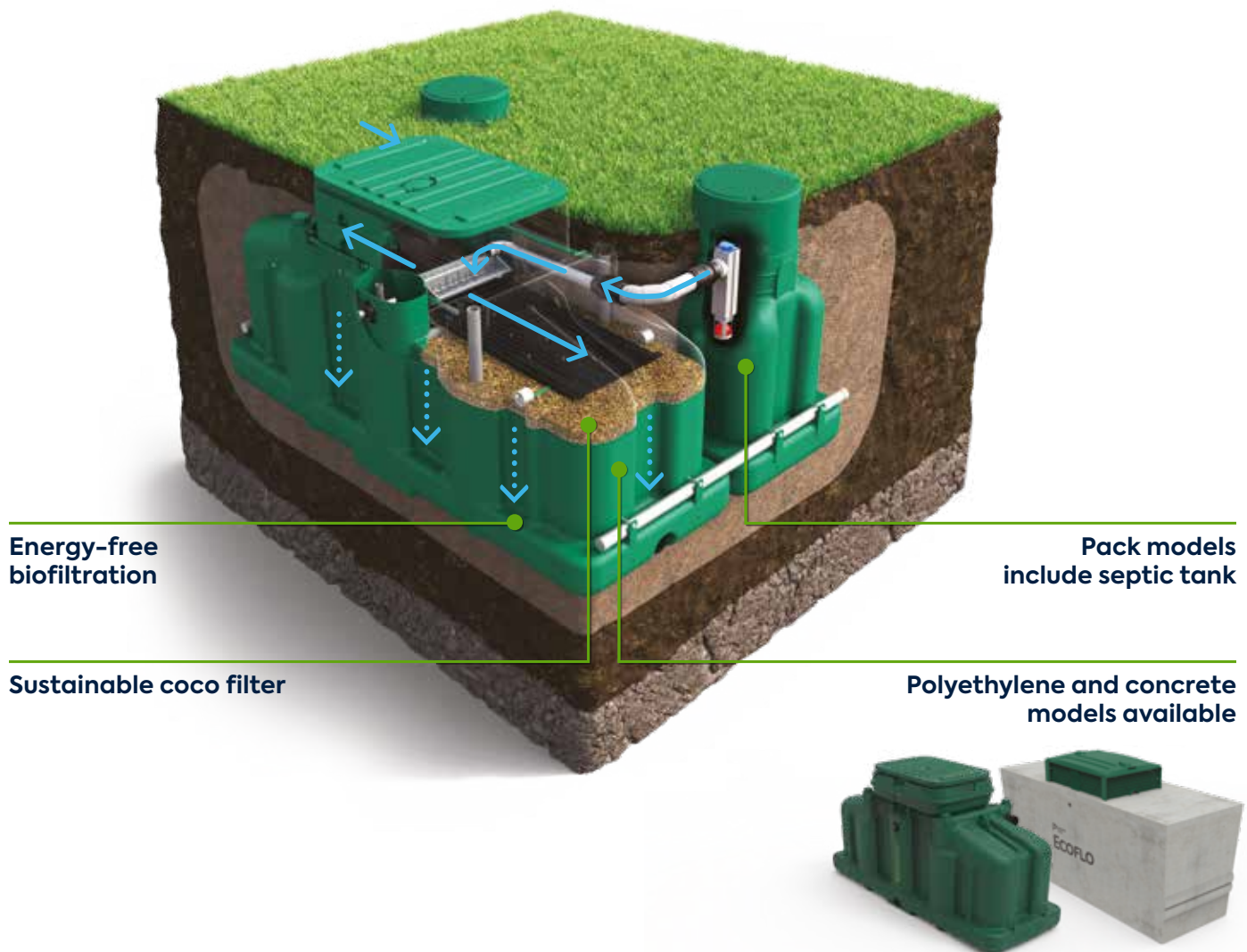


\* These are general steps. They may vary depending on your local regulation.



# Ecoflo is how we make a sustainable difference. Together.

Join us in the movement to make the world a better, more sustainable place.  
Protect your property and the environment by choosing Ecoflo, the most  
eco-responsible septic system available.



**THE #1 COMPACT  
FILTER CHOICE!**

SCAN TO DISCOVER  
HOW DOES THE ECOFLO  
BIOFILTER WORK



## INSTALLED FOR LIFE

- easy installation
- never needs to be moved or replaced
- never damages your landscaping

## PEACE OF MIND

- 24/7 autonomous operation
- never clogs your drain field
- never contaminates your property

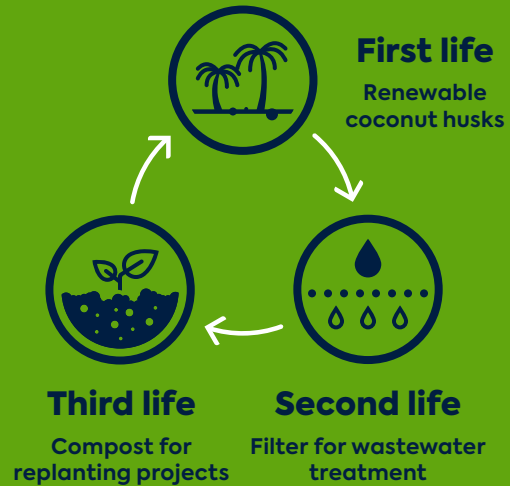
## COMPACT AND DISCREET

- up to 50% smaller than traditional systems
- blends into your landscaping
- odorless

## BEST LONG-TERM INVESTMENT

- maintains the selling value of your property
- no energy bills for wastewater treatment
- no high-priced repairs or hidden costs
- no full-system replacements

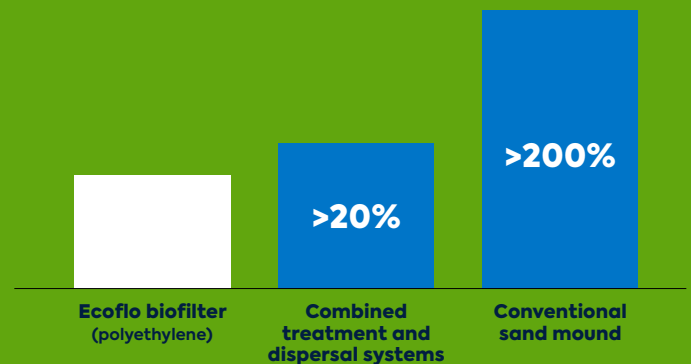
## NATURAL, RENEWABLE, COMPOSTABLE FILTER



## LOWEST CARBON FOOTPRINT

From production and shipping to installation, maintenance, and usage, the Ecoflo biofilter has the lowest carbon footprint of any system on the market — and the numbers to prove it.

### Total after 50-year life cycle



### Notes

- Based on analysis of septic installations in Pennsylvania.
- Systems installed in soil with percolation rate of 60 mpi and rated for four bedrooms.
- Distances between installations and required materials assumed to be 40 miles for filtration sand and stone, 20 miles for backfill.
- Ecoflo biofilter installations include final dispersal to at-grade bed.

We offer two different tanks to ensure that your septic installation fits with your soil and land. The results of your soil analysis determine the best tank material for your needs.

### POLYETHYLENE

Lightweight, compact, and easy to handle.

#### Site features

- permeable to very permeable soil
- difficult or remote access

#### System features

- durable construction
- quick installation (pre-assembled internal components)
- integrated pump vault
- possibility to integrate a UV disinfection system



### CONCRETE

Robust system suitable for all soils and site conditions.

#### Site features

- any soil type
- high groundwater
- accessible to heavy machinery

#### System features

- quick installation (pre-assembled internal components)
- integrated pump vault
- possibility to integrate a UV disinfection system



# ECOFLO<sup>®</sup>

## Filtering medium

The Ecoflo biofilter filters wastewater through coconut husk fragments. This material provides stable treatment performance, regardless of intermittent use, variable flows, or electrical failures.

### COCONUT HUSK FRAGMENTS

This material is made from the husk that surrounds the edible part of a coconut. By transforming this material into a filtering medium, we give second life to a valuable resource and ensure that no part of the coconut tree's bounty is wasted.

The husk is cut into fragments through a mechanical process that gives us complete control over the size of each fragment and its overall porosity. This guarantees a uniform filtering medium that delivers consistently high performance over time.



# REWATEC<sup>™</sup>

## Tertiary system

When soil is impermeable, it is necessary to disinfect the wastewater in order to remove pollutants. These pollutants include fecal coliforms and sometimes even phosphorus, which would otherwise cause blue-green algae blooms in nearby lakes and rivers.

This type of treatment allows direct discharge that respects the sensitivity of the surrounding environment. A tertiary installation includes a septic tank and an advanced secondary treatment system, plus an additional unit to perform final disinfection before wastewater is discharged into the environment.

We have a wide range of tertiary treatment options, and we are the only manufacturer to offer a 100% passive disinfection solution.

# REWATEC™

Tertiary  
treatment

## Integrated UV disinfection (DiUV)

Our integrated UV disinfection option reliably kills wastewater pathogens, so you can safely send wastewater into a ditch or watercourse.

### READY TO INSTALL

Pre-assembled and pre-wired for fast and simple installation.

### SOLUTIONS FOR ANY SITE

Can be integrated in many polyethylene and concrete Ecoflo biofilter models. Also available in a separate tank.

#### Wi-Fi system

Sends us instant alerts, so we can help you protect your investment and the environment. If there is a problem, a service team will follow up on it.

#### Improved design

Strong and reliable parts ensure easy operation and maintenance.

#### New UV lamp

Kills wastewater pathogens with UV radiation.

#### Integrated pump

Discharges treated wastewater in any site conditions and keeps ditch water out of the treatment unit.



**2**  
YEAR  
WARRANTY

Parts and labor



## Nitrogen reduction (ECDn)

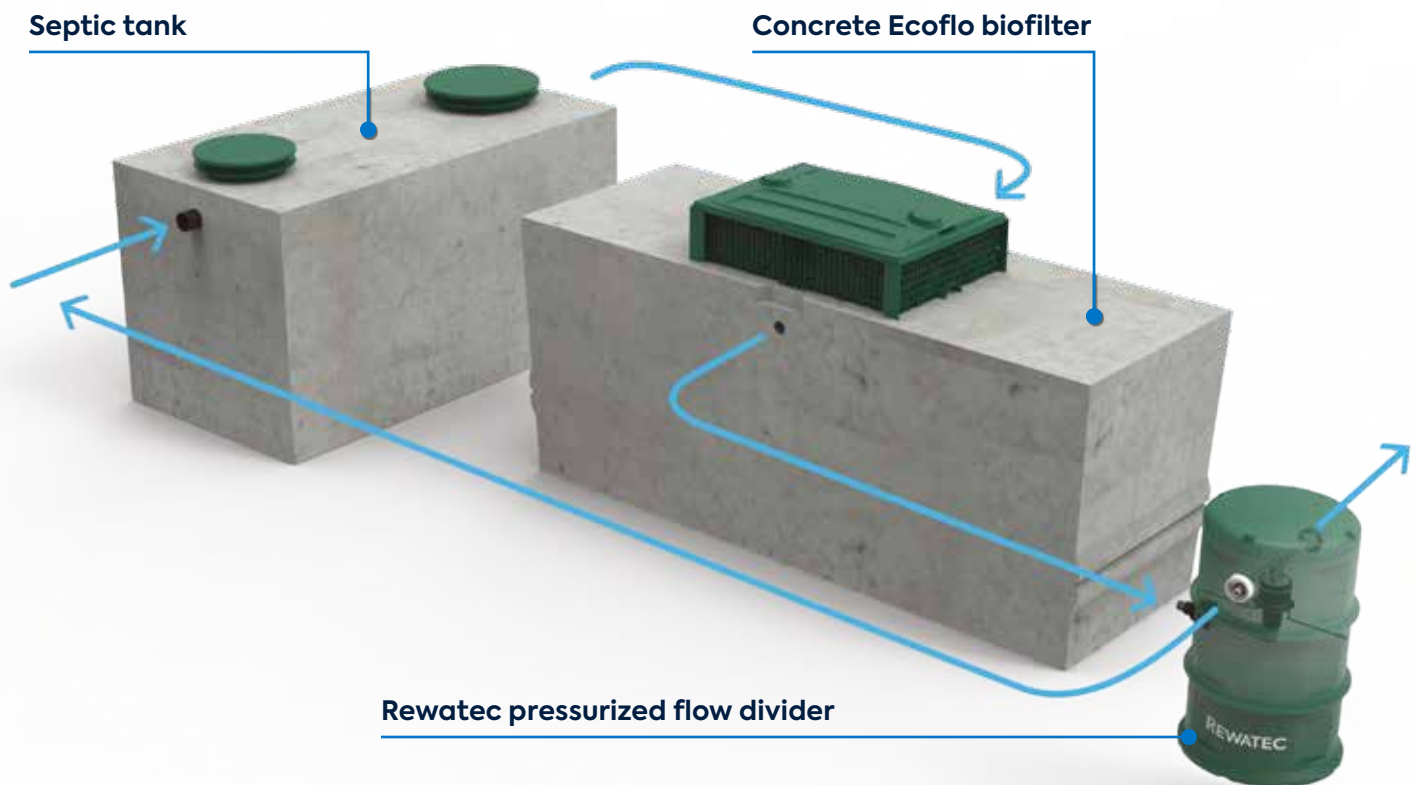
Our nitrogen reduction option converts ammoniacal nitrogen into nitrogen gas, so you can safely discharge wastewater near ecologically sensitive areas.

### COMPACT SIZE

Ideal for sites with limited installation space.

### TOTAL PROTECTION

Prevents property contamination and protects public health.





## Our team is at your service

We support you by maintaining the performance of your system and ensuring your peace of mind.

### START-UP SERVICES (IOWA AND PENNSYLVANIA)

- telephone information session
- field visit to confirm the proper installation of internal components and to ensure effective wastewater treatment

### WARRANTY

Our 10-year Ecoflo biofilter warranty is the most complete in the industry:

- all treatment-related parts and labor
- proper functioning of the filtering medium
- no clogging of the septic drain field
- no substandard performance



	Original Warranty		Replacement Warranty	
	Material	Labor	Material	Labor
TREATMENT PROCESS AND COMPONENTS				
Natural, renewable, and compostable filtering medium	10 years	10 years	10 years	10 years
Treatment performance	10 years	10 years	10 years	10 years
No clogging or excess sludge	10 years	10 years	10 years	10 years
Tipping bucket and distribution plates	10 years	10 years	10 years	10 years
Access covers and sampling device	10 years	10 years	10 years	10 years

TREATMENT TANKS				
Polyethylene and concrete	10 years	10 years	10 years	10 years

PUMPING STATIONS				
Pump, alarm, and floats	3 years	3 years	2 years	2 years

\* Original pumps, alarms, and floats guaranteed for three years.  
Replacements guaranteed for two years. Includes labor.



## A product supported by the manufacturer

### PREVENTIVE MAINTENANCE PROGRAM

Maintenance is an opportunity to identify components that need to be repaired or replaced. It is also a chance to correct small problems before they get more serious.

#### Annual maintenance is the best way to:

- protect your investment in your Ecoflo biofilter
- maximize the lifespan of your system's filtering medium
- ensure effective wastewater treatment for years to come

#### Your annual maintenance contract includes:

- maintenance visit by one of our trained partners
- analysis by our experts
- maintenance report (sent to you and archived in our files)
- 24/7 customer service

To consult your maintenance reports and information about your septic system, please visit our online Customer Space.

### FILTERING MEDIUM REPLACEMENT

We guarantee the filtering medium in the Ecoflo biofilter for 10 years, but its lifespan may exceed 15 years. Our experts analyze the system's service reports to determine when the filter needs to be replaced. By preventively replacing the filter, we can guarantee that your system will always protect your property and the environment.

#### Advantages:

- only takes two hours
- no damage to your lawn or landscaping
- renews the original warranty on your system's treatment performance

### 2022 AVERAGE COSTS

Service	Cost
Maintenance	\$185
Filtering medium replacement	\$2,400





# People and Technologies making a difference

Premier Tech brings to life products that help feed, protect, and improve our world.

- **founded in 1923**
- **family business**
- **2,420 team members in North America**
- **4,700 team members worldwide**
- **24 manufacturing facilities in North America**
- **47 factories in 27 countries**

We develop and manufacture solutions for wastewater treatment and rainwater harvesting.

Together, we continuously innovate to create sustainable solutions that are accessible to all.

**PREMIER  
TECH**

## CUSTOMER SERVICE

+1 800 632-6356  
[info.ptwe.na@premiertech.com](mailto:info.ptwe.na@premiertech.com)



### PT Water and Environment

+1 800 632-6356  
[info.ptwe.na@premiertech.com](mailto:info.ptwe.na@premiertech.com)  
[PT-WaterEnvironment.com](http://PT-WaterEnvironment.com)



The information contained in this document was up-to-date and consistent with the information available at the time of publication. Premier Tech Ltd. makes no warranties or representations as to its accuracy. Because of its continuous improvement policy, Premier Tech Ltd. and its affiliated companies reserve the right to change and/or discontinue the manufacture of any product and/or modify technical data and prices, for any reason whatsoever and at its sole discretion, without further notice and without liability to anyone in this regard. ECOFLO®, REWATEC™, PREMIER TECH®, and PREMIER TECH & DESIGN™ are trademarks of Premier Tech Ltd. or its affiliates. Ecoflo® is protected under patents: CA2499637; US7097768; ES2285173; EP1539325 (BE, FR). Notice issued on 2019-01-11. For current data regarding all patent application(s) and patent(s) for this product or any part thereof, consult the website [patentmarking.premiertech.com](http://patentmarking.premiertech.com) (reference: 3685).

© 2022 Premier Tech Ltd. All rights reserved.  
Printed in Canada

USA  
20220530