

# PRESSURIZED FLOW DIVIDERS PFS-300C TO PFS-1000C (3 TO 10 OUTLETS)

## Installation Guide and Owner's Manual

This guide provides the information regarding the installation and the warranty of the **Pressurized Flow Dividers PFS-300C (3 outlets) to PFS-1000C (10 outlets)** from **Premier Tech Aqua**. For additional information, contact our customer service at **1 800 632-6356**.

### TECHNICAL DATA

#### MATERIALS

PVC and polyethylene

#### INLET/OUTLET

**Inlet:** Crenate adapter for 50 mm (2") nominal diameter flexible pipes.

**Outlet:** Male outlet adapted to couplings for the 100 mm (4") nominal diameter PVC pipe (DR 35 or BNQ).

#### RATIO OF FLOW DISTRIBUTION

Variation of less than 5% with under 6 outlets.

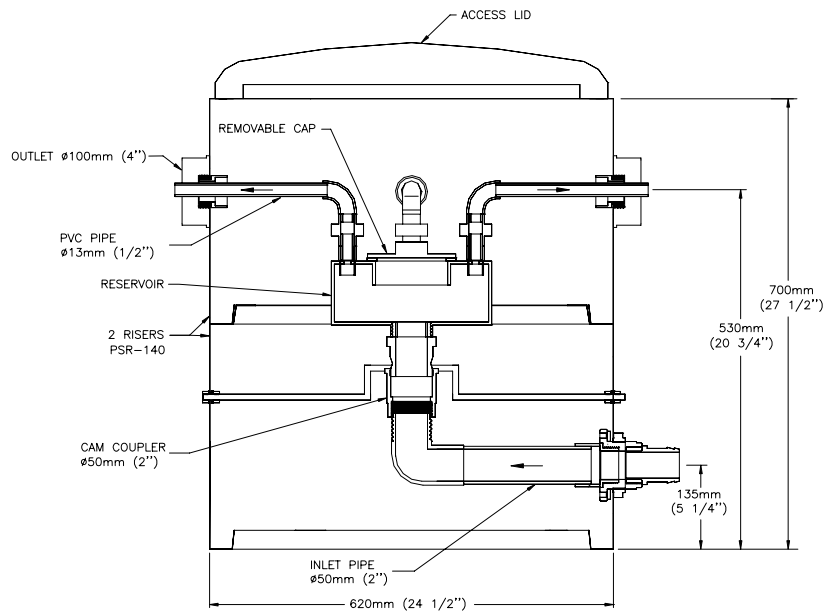
Variation of less than 8% with 6 outlets or more.

#### OPERATION PRESSURE

7 kPa (1 psi) minimum and 28 kPa (4 psi) maximum.

#### INCLUDED

One (1) Tee-Y adapter 100 mm Ø (4") BNQ per PFS outlet.



### INSTALLATION PROCEDURE

1. Product description and requirements
2. Location and installation
3. Warranty

# 1. PRODUCT DESCRIPTION AND REQUIREMENTS

## 1.1 PRODUCT DESCRIPTION

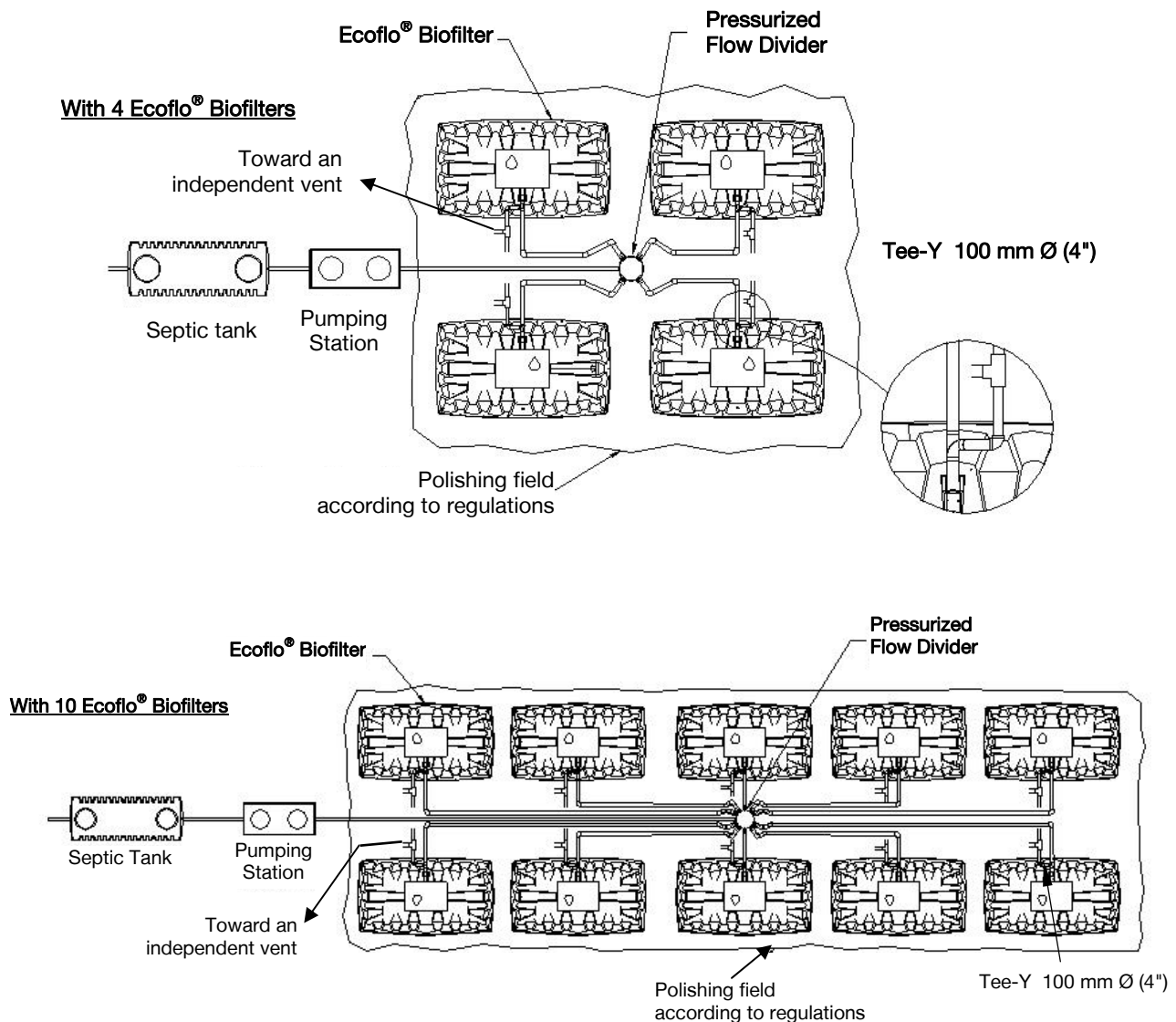
The **Pressurized Flow Dividers PFS-300C to PFS-1000C** are complementary components of the **Ecoflo® Biofilter** for applications in average to larger size projects. They allow cluster installation of 3 to 10 **Ecoflo® Biofilters** to handle larger flows and can also be used in any type of septic installation. They ensure that effluent, that has already undergone preliminary treatment in one or more septic tanks equipped with effluent filter(s), is divided into 3 to 10 equal parts, depending on the installation's specific requirements.

The flow dividers are pressure fed and distribute the effluent to the treatment systems through gravity flow pipes. The **PTA Pressurized Flow Dividers PFS-300C to PFS-1000C** are enclosed in a 620 mm (24.5") polyethylene reservoir. A lid provides easy access for maintenance.

# 2. LOCATION AND INSTALLATION

## 2.1 LOCATION

The **Pressurized Flow Dividers PFS-300C to PFS-1000C** from **PTA** are connected to the feeder pipe joining the pumping station to the treatment systems such as the **Ecoflo® Biofilters** or conventional drainfields.



## 2.2 INSTALLATION AND MAINTENANCE

The flow divider is easy to install. Simply connect the discharge pipe of the pumping station to the inlet of the flow divider (use a pipe collar to strengthen the connection).

The pressurized flow divider must be installed on a leveled, compacted surface. Connect the gravity outlets of the flow divider to the 100 mm Ø (4") PVC pipe fittings that are directly hooked-up to the **Ecoflo® Biofilters** or any other treatment system (use PVC primer and glue for all connections).

In an installation with **Ecoflo® Biofilters**, the connection to the biofilters inlets must be done with 100 mm Ø (4") Tee-Y supplied with the flow divider. These Tee-Y allow ensuring both water supply and air circulation inside the biofilters via an independent vent (the air pipe being connected to the biofilter's inlet (see drawings on the previous page).

Take note that the flow divider reservoir must get completely empty between each start-up of the pump that feeds it. If the installation configuration does not allow respecting this requirements, precautions must be taken to protect the system against freezing.

After the initial start-up of the system, a cleaning of the flow divider reservoir must be done to remove the installation debris that could have accumulated. Annual inspection of the reservoir is recommended and cleaning if necessary. Therefore, it is important that the lid of the reservoir be accessible at all times.

## 3. WARRANTY

---

**Premier Tech Aqua** warrants to the Customer each part of the **Pressurized Flow Dividers PFS-300C to PFS-1000C** (parts and labour) against any defects in material and workmanship for a period of one (1) year starting on the date of purchase (proof of purchase required) if the flow dividers have been installed and used according to the installation, maintenance and use instructions as described in the Installation Guide. The warranty only covers the **Pressurized Flow Dividers PFS-300C to PFS-1000C** and does not extend to peripheral equipments.

### Exclusion

**Premier Tech Aqua** will not be liable for any damages, problems or expenses arising from inappropriate use of the product. This warranty will be void if product failure is due to modifications, faulty installation, improper usage or alterations.



☎ 1 800 632-6356  
📠 418 862-6642  
pta@premiertech.com  
PREMIERTECHAQUA.COM

---

The information contained in this document is based upon the latest information available at the time of publication and is designed to provide you with a general introduction to our products. We make no warranties or representations as to its accuracy. We are continually updating and improving our products and reserve the right to amend, discontinue, alter or change specifications and prices without prior notice. The PTA Flow Dividers are protected under patents: Canada 2 577 238 (patent pending) and USA 7 044 165.

© Premier Tech Ltd, 2011